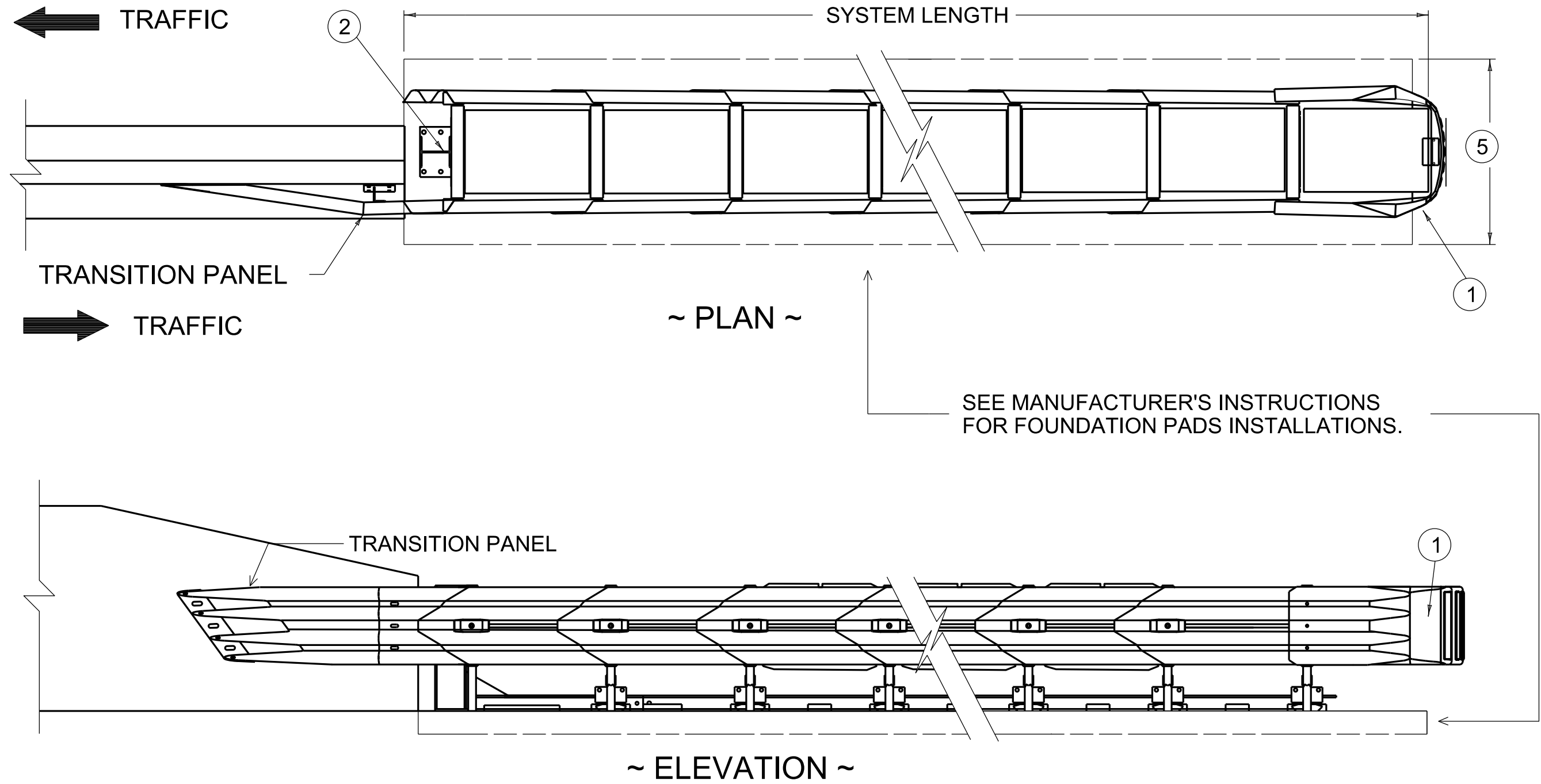


CRASH CUSHION TYPE 6 —APPROVED SYSTEMS LIST

CLASS	SPEED (MPH)	ATTENUATOR				SYSTEM LENGTH	SUGGESTED AADT* RANGE (P.C.P.L)**
		MODEL	PRODUCT NAME	MANUFACTURER	WIDTH		
B	45 & LESS	TL2	SCI 70 GM IMPACT ATTENUATOR SMART CUSHION	HILL AND SMITH OF COLUMBUS, OHIO	24"	13'-6"	UP TO 12,000
			3-BAY QUADGUARD M10	VALTIR OF DALLAS, TEXAS	24"	13'-0"	
	OVER 45	TL3	SCI 100 GM SMART CUSHION	HILL AND SMITH OF COLUMBUS, OHIO	24"	21'-6"	UP TO 12,000
			6-BAY QUADGUARD M10	VALTIR OF DALLAS, TEXAS	24"	22'-0"	
C	OVER 45	TL3	SCI 100 GM SMART CUSHION	HILL AND SMITH OF COLUMBUS, OHIO	24"	21'-6"	≥8,000
			QUADGUARD ELITE M10	VALTIR OF DALLAS, TEXAS	24"	27'-2"	
D	OVER 45	TL3	REACT M	VALTIR OF DALLAS, TEXAS	38 ¾"	22'- 2¾"	≥15,000

*ANNUAL AVERAGE DAILY TRAFFIC **PASSENGER CARS PER LANE



~ NOTES ~

- 1 NOSE ASSEMBLY (OBJECT MARKER TYPE 3 AS REQUIRED).
- 2 BACKUP ASSEMBLY PER MANUFACTURER'S ASSEMBLY INSTRUCTIONS
3. IN THE DRAWING ABOVE, THE CRASH CUSHION TYPE 6 IS SHOWN ATTACHED TO A CONCRETE MEDIAN BARRIER.
4. A PROPER TRANSITION PANEL OR SIDE PANEL MUST BE INSTALLED ON EACH SIDE OF THE CRASH CUSHION BACKUP. CONSULT THE PLANS TO DETERMINE TRAFFIC DIRECTION AND THE TYPE OF BARRIER OR ROADWAY FEATURE BEING SHIELDED. REFER TO THE MANUFACTURER'S ASSEMBLY INSTRUCTIONS FOR TRANSITION DESIGN AND INSTALLATION DETAILS. SELECT THE APPROPRIATE TRANSITION TYPE AND ALL REQUIRED COMPONENTS. ALL WORK AND MATERIALS RELATED TO THE TRANSITION ARE INCIDENTAL TO THE CRASH CUSHION TYPE 6 BID ITEM.
- 5 PREPARE THE SITE AND INSTALL FOUNDATION PADS APPROPRIATE FOR PERMANENT INSTALLATIONS IN ACCORDANCE WITH MANUFACTURER SPECIFICATIONS. FOLLOW ALL MANUFACTURER INSTRUCTIONS FOR MATERIALS, THICKNESS, SPECIFICATIONS, AND ANCHORING. ALL WORK AND MATERIALS ASSOCIATED WITH THE FOUNDATION PAD ARE INCIDENTAL TO THE CRASH CUSHION TYPE 6 BID ITEM.
6. CRASH CUSHION TYPE 6 INSTALLATIONS SHALL FOLLOW THE MANUFACTURER'S INSTRUCTIONS. SYSTEMS SHALL NOT BE MODIFIED FROM THEIR APPROVED CONFIGURATIONS.
7. BOTH CRASH CUSHION TYPE 6 CLASS C AND CLASS D ARE CONSIDERED A SEVERE USE CRASH CUSHION.
8. CLASS D CRASH CUSHIONS ARE TO BE PLACED IN AREAS OF HIGH CRASH RATES WHERE MAINTENANCE WILL BE DIFFICULT.

BID ITEMS AND UNIT TO BID

CRASH CUSHION TYPE 6 CLASS   .

 CLASS B, C OR D, AS REQUIRED.

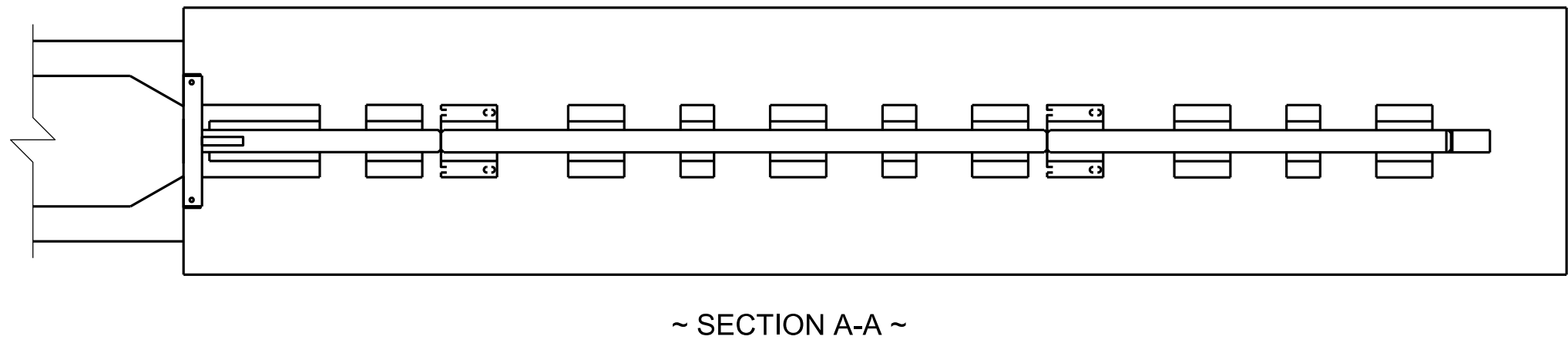
 EITHER TEST LEVEL 2 (TL2) OR TEST LEVEL 3 (TL3), AS REQUIRED.

 SEE "CONNECTION DETAILS OF CRASH CUSHION TYPE 6 TO DOUBLE FACE GUARDRAIL", RBC-110.

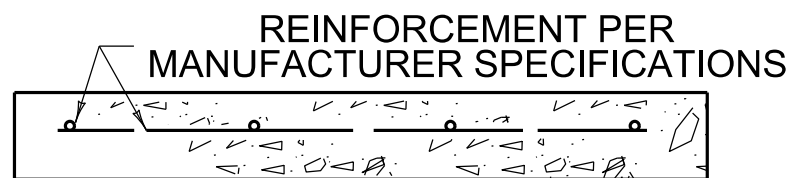
BID ITEMS AS APPLICABLE

OBJECT MARKER TYPE 3 (AS REQUIRED) EACH

USE WITH CUR. STD. DWG.
RBE-065 RBC-110



~ SECTION A-A ~



~ CONCRETE PAD SECTION ~
(PER MANUFACTURERS SPECIFICATIONS)
REFER TO NOTES 5

THIS STANDARD DRAWING
PROVIDES GUIDANCE ONLY.
CONSULT THE MANUFACTURER
FOR THE LATEST DETAILS AND
INSTALLATION INSTRUCTIONS.

SCAN THE QR CODES TO ACCESS THE MANUFACTURER'S ASSEMBLY INSTRUCTIONS FOR THE CRASH CUSHIONS.

HILL AND SMITH
SMART CUSHION



VALTIR
QUADGUARD M10



VALTIR
QUADGUARD
ELITE M10



VALIR
REACT M



COMMONWEALTH OF KENTUCKY
DEPARTMENT OF HIGHWAYS



CRASH CUSHION

CRASH CUSHION TYPE 6 (ONE AND TWO DIRECTION)

STANDARD DRAWING NUMBER
RBE-060-16

SUBMITTED  08-11-2025
DIVISION DIRECTOR DATE
APPROVED  08-11-2025
STATE HIGHWAY ENGINEER DATE

REVISION DATE: 08/11/2025
REVISION NUMBER: 0

BARRIERS